

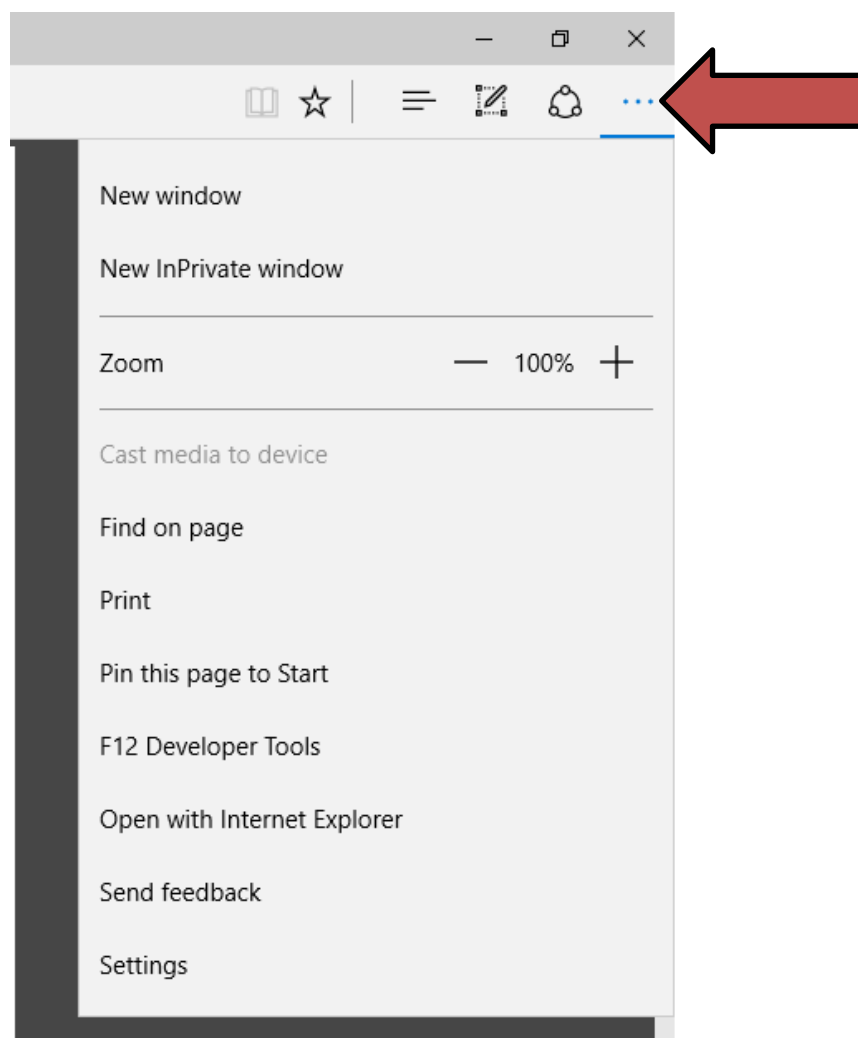
# Instructions for using fillable Eforms:

Fillable “Eforms” found on the South Dakota website should only be filled out using Internet Explorer. Using any other browser can lead to unpredictable results.

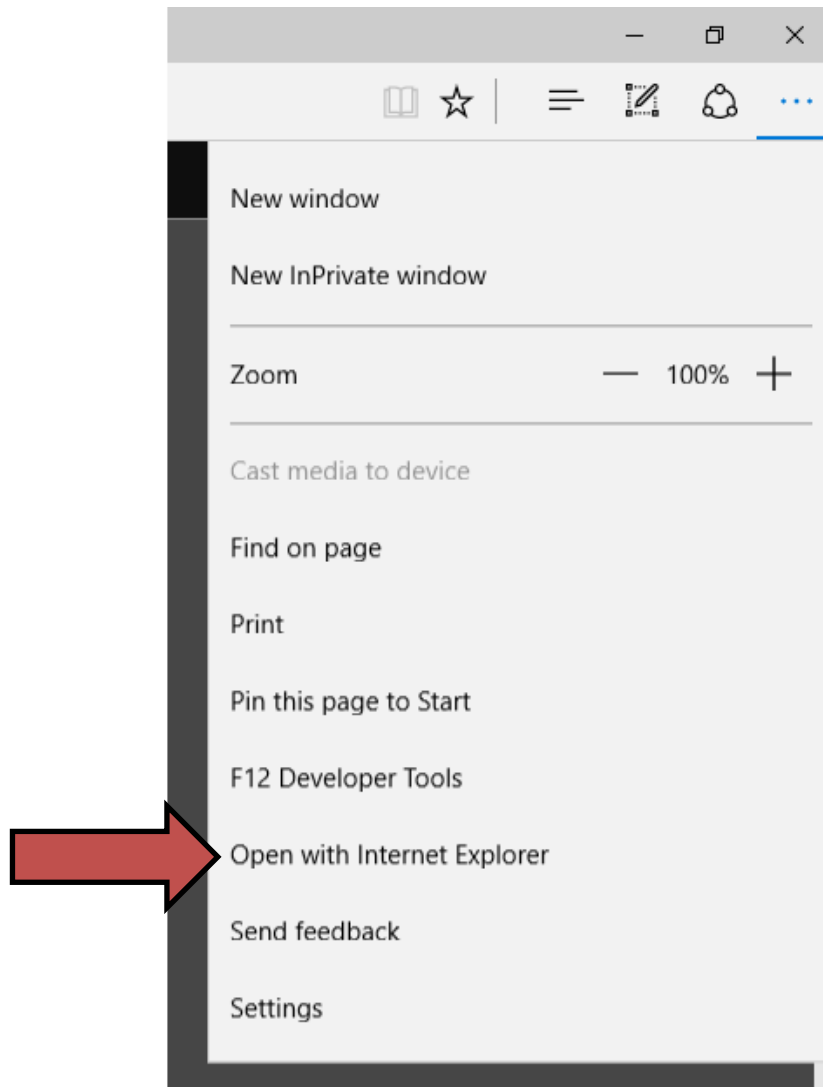
For forms with the “Send Electronically” button, do not save a copy on your computer and submit it from there. Please submit them directly from the website. Submission from a saved copy will result in unsuccessful delivery of the form.

If you are using Microsoft Edge, Please follow the following simple instructions:

- ▶ In Edge, open the document and click on the 3 dots at the upper right hand of the browser.



▶ Select “open with Internet Explorer”



▶ Form displays and functions as normal

